

FIRE ALARM LEGEND

- SMOKE DETECTOR WITH SOUNDER BASE.
- HEAT DETECTOR WITH SOUNDER BASE.
- LANDLORD SYSTEM DETECTOR
- FIRE ALARM INTERFACE UNIT (FOR INTERFACE UNIT LOCATIONS & QUANTITIES REFER TO LIGHTING AND FIRE ALARM LAYOUTS).
- WALL MOUNTED SOUNDER & XENON BEACON
- FIRE ALARM PANEL
- MANUAL CALL POINT

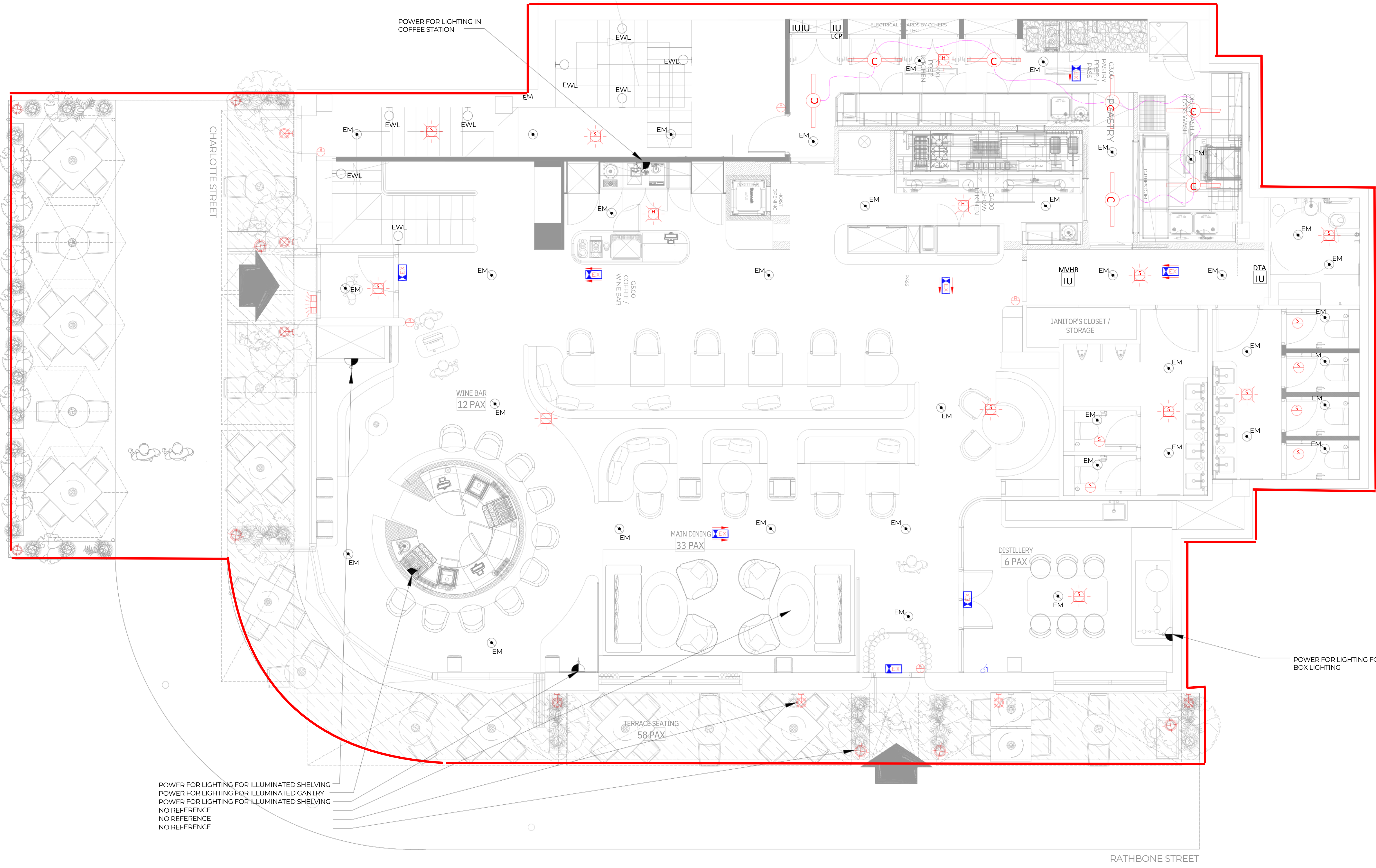
LIGHTING LEGEND

- LED SPOTLIGHT
- LED WALL MOUNTED BULKHEAD
- LED CEILING MOUNTED BULKHEAD
- LED CEILING MOUNTED BULKHEAD
- PRESENCE DETECTOR
- EMERGENCY DOWNLIGHT ESCAPE ROUTE - CORRIDORS - RECESSED
- EMERGENCY DOWNLIGHT EXTERNAL LIGHTING - WALL MOUNTED
- EMERGENCY DOWNLIGHT ESCAPE ROUTE - OPEN AREAS - RECESSED
- EMERGENCY TWIN DOWNLIGHT - EXTERNAL - WALL MOUNTED
- EMERGENCY EXIT SIGN - IP42
- EMERGENCY EXIT SIGN - IP67
- DOUBLE SIDED DIRECTIONAL EMERGENCY EXIT SIGN - IP42
- ONE WAY SWITCH GENERAL (N DENOTES NUMBER OF GANGS)

ABBREVIATIONS

DTA	DISABLED TOILET ALARM
SPK	AV SPEAKER
FCU	FAN COIL UNIT
AWN	EXTERNAL AWNING
ELH	EXTERNAL ELECTRIC HEATER
EH	INTERNAL ELECTRIC HEATER
HD	HAND DRYER
CV	CEILING VOID
GAS	GAS SOLENOID
DAC	DOOR ACCESS CONTROL

Licensable activities



LIGHTING NOTES

- REFER TO SEPARATE LIGHTING SCHEDULES FOR LUMINAIRE DETAILS.
- REFER TO LIGHTING DESIGN STUDIO AND UNIVERSAL DESIGN STUDIO DOCUMENTS FOR FURTHER DETAILS ON LUMINAIRES AND CONTROLS.
- UPON ACTIVATION OF ANY PIR IN THE STAIR CORE, LIGHTING ON THAT FLOOR, THE FLOOR ABOVE AND THE FLOOR BELOW WILL ACTIVATE.
- EMERGENCY LIGHTING TEST KEY SWITCHES TO BE LOCATED ADJACENT DISTRIBUTION BOARDS.
- REFER TO FLOOR PLANS FOR LOCATIONS OF ALL EMERGENCY LIGHTING AND EMERGENCY EXIT SIGNS. THESE ARE TO BE PROVIDED WITH 3-HOUR BATTERY BACK-UP.
- LIGHTING WITHIN LIFTS IS TO BE PROVIDED BY OTHERS.
- THE WIRING INSTALLATION TO ALL LUMINAIRES WITHIN THE FIRE-FIGHTING ACCESS CORRIDOR, STAIRCASE AND LIFT LOBBIES IS TO BE CARRIED OUT USING FIRE-RESISTANT CABLES IN ACCORDANCE WITH BS9999 AND BS6387.
- ALL EXTERNAL FITTINGS AND ACCESSORIES SHALL BE WEATHERPROOF AND IP RATED.
- CEILING TYPES TO BE CONFIRMED PRIOR TO ORDER OF LIGHTING AND ACCESSORIES.

FIRE ALARM NOTES

- THE FIRE ALARM SYSTEM HAS BEEN DESIGNED IN ACCORDANCE WITH BS5839-1 AND BS5839-6.
- THE SYSTEM SHALL BE CLASSIFIED AS A CATEGORY L1, CATEGORY L2 ON ALL THE NON-RESIDENTIAL LEVELS, CATEGORY L5 ON THE RESIDENTIAL FLOORS WITHIN LANDLORD AREAS.
- CATEGORY L01 WITHIN ALL APARTMENTS, INTERFACES ASSOCIATED WITH ALL MECHANICAL SERVICES SHALL BE COORDINATED WITH THE MECHANICAL SUB-CONTRACTOR AND SPECIALIST INSTALLERS PRIOR TO FIRST FIX.
- SURFACE MOUNTED AND RECESSED EXTERNAL ELECTRICAL ACCESSORIES SHALL BE RATED IP67 PROTECTION AND COORDINATED WITH THE ARCHITECT AND FACADE SPECIALIST PRIOR TO FIRST FIX.
- REFER TO SEPARATE SCHEMATICS FOR FURTHER DETAILS OF THE FIRE ALARM SYSTEM, DISABLED REFUGE SYSTEM AND THE DISABLED TOILET ALARM SYSTEM.
- LOOP REFERENCES, SIZING AND VOLTAGE DROPS ETC. SHALL BE CALCULATED BY THE SPECIALIST CONTRACTOR. THE SPECIALIST SHALL ENSURE 95% SPARE CAPACITY PER LOOP AND A MINIMUM OF 30% SPARE ADDRESS CAPACITY.
- CEILING VOIDS GREATER THAN 800mm SHALL BE PROTECTED BY FIRE DETECTION. REMOTE LED INDICATORS ARE TO BE PROVIDED TO INDICATE THE OPERATION OF AUTOMATIC DETECTORS WHICH ARE MOUNTED IN LOCATIONS WHERE THEY CANNOT READILY BE SEEN.

GENERAL NOTES

- NOTES AS DETAILED ON ALL DRAWINGS APPLY
- WHERE APPROPRIATE THIS DRAWING SHALL BE READ IN CONJUNCTION WITH ALL OTHER TENDER DRAWINGS AND DOCUMENTS.
- THE COMPLETE ELECTRICAL INSTALLATION SHALL BE IN COMPLIANCE WITH BS 7671:2018 +A2:2022. INCLUDE ALL NECESSARY OFFSETS OF SERVICES IN CEILING VOIDS, SERVICE DUCTS AND ALL OTHER AREAS TO ACHIEVE CROSSOVERS AND CO-ORDINATION OF MECHANICAL AND ELECTRICAL SERVICES.
- THIS DRAWING MUST BE READ IN CONJUNCTION WITH THE ARCHITECT'S LAYOUT, ELEVATIONS AND RCP'S.
- REFER TO SCHEMATIC WIRING DIAGRAMS FOR FURTHER INFORMATION WHERE APPLICABLE. FOR DISTRIBUTION BOARD REFERENCES, REFER TO LOW VOLTAGE DISTRIBUTION SCHEMATICS. REFER TO THE TYPICAL RISER SETTING OUT DRAWING FOR FURTHER INFORMATION ON RISERS. REFER TO APARTMENT LAYOUT DRAWINGS FOR FURTHER DETAILS ON SERVICES WITHIN APARTMENTS.
- FIRE DETECTION AND ALARM SYSTEM OF A MINIMUM CATEGORY L2 IN ACCORDANCE WITH BS 5839.

P2	13.02.24PRELIMINARY ISSUE - 02	ND	PQ
P1	07.10.24PRELIMINARY ISSUE - 01	DQ	PQ
REV	Date	Description	DR CK

Caldwell

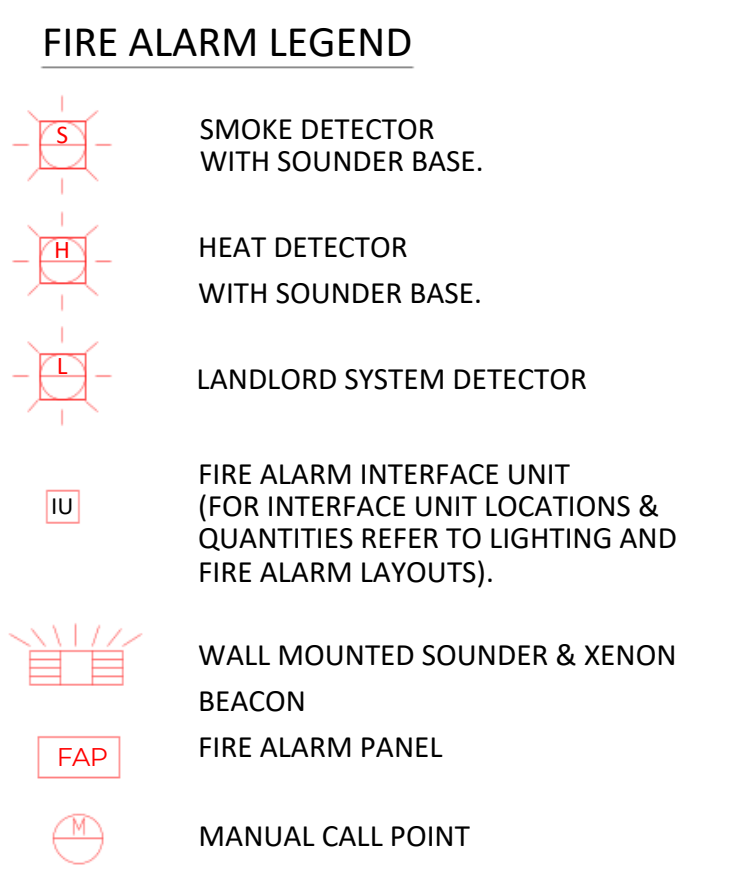
ARCHITECT
 FM - CM
 PROJECT- 4180
CHARLOTTE STREET LONDON

PROJECT STATUS
S4

DRAWING
ELECTRICAL SERVICES INSTALLATION
LIGHTING & FIRE ALARM SERVICES

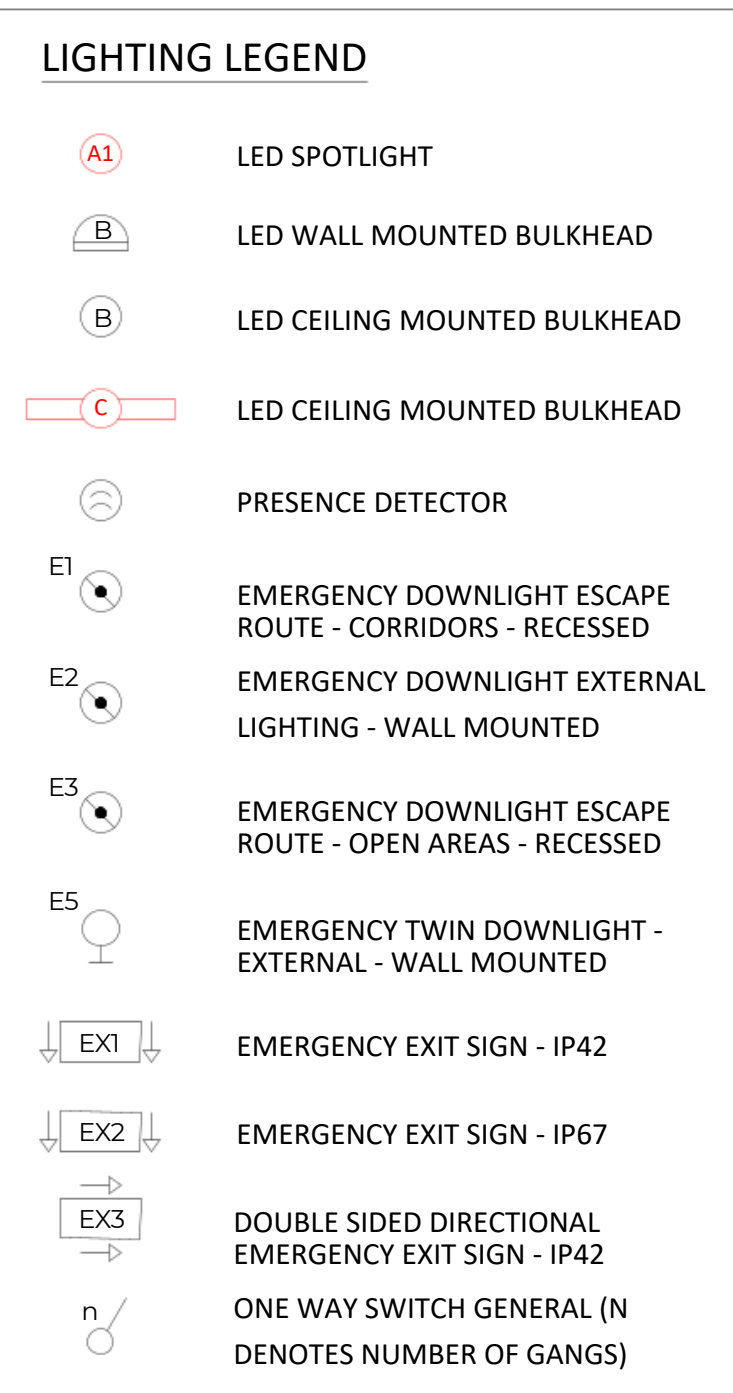
GROUND FLOOR LAYOUT

SCALE	DATE	DESIGNED	CHECKED
1:50@A1	JULY'24	DQ	PQ
DRAWING No.			REV
4180-CCE-BDE-00-DR-E-74001			P2



ABBREVIATIONS

DTA	DISABLED TOILET ALARM
SPK	AV SPEAKER
FCU	FAN COIL UNIT
AWN	EXTERNAL AWNING
ELH	EXTERNAL ELECTRIC HEATER
EH	INTERNAL ELECTRIC HEATER
HD	HAND DRYER
CV	CEILING VOID
GAS	GAS SOLENOID
DAC	DOOR ACCESS CONTROL

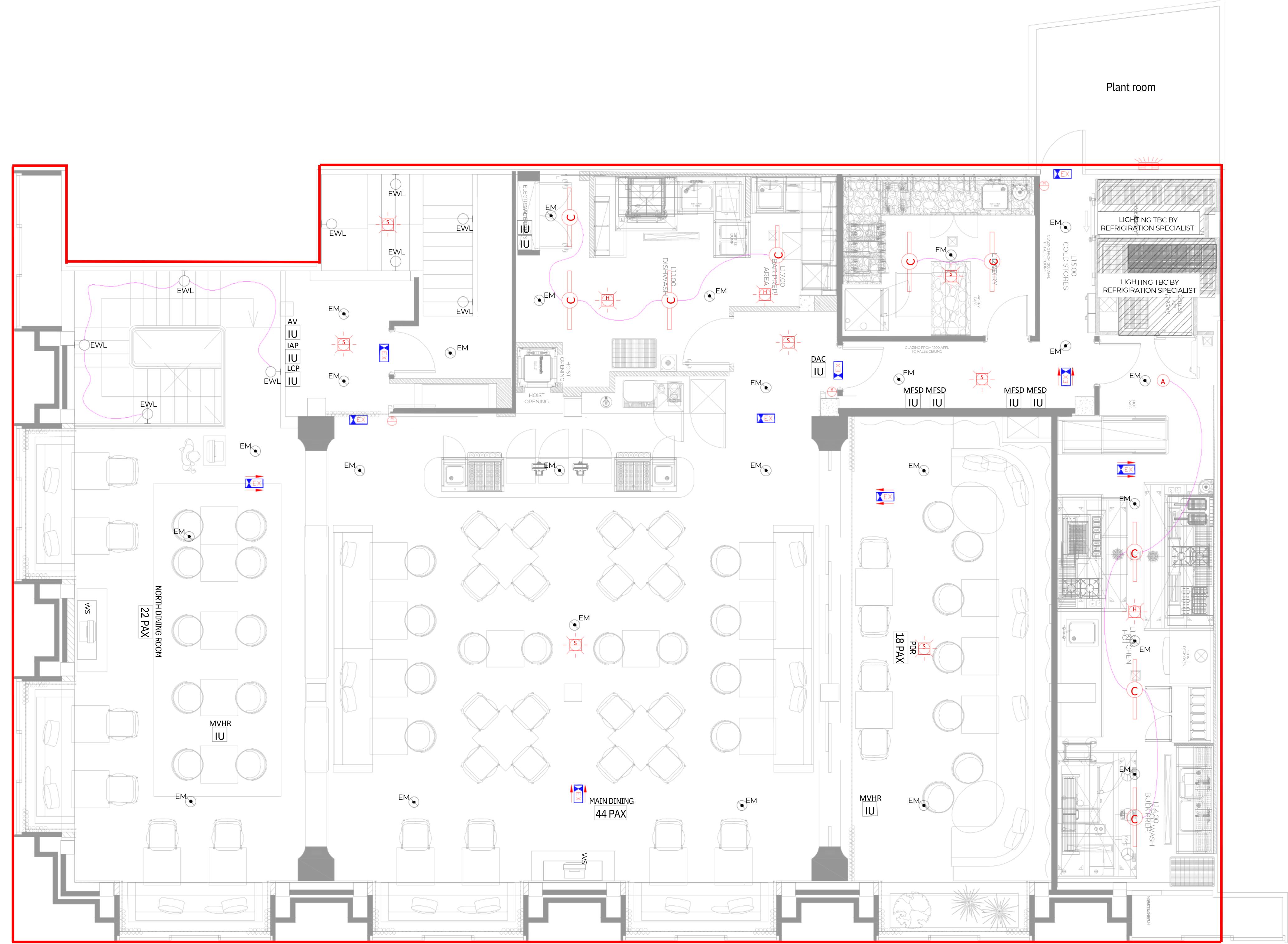


— Licensable activities

- ### GENERAL NOTES
- NOTES AS DETAILED ON ALL DRAWINGS APPLY
 - WHERE APPROPRIATE THIS DRAWING SHALL BE READ IN CONJUNCTION WITH ALL OTHER TENDER DRAWINGS AND DOCUMENTS.
 - THE COMPLETE ELECTRICAL INSTALLATION SHALL BE IN COMPLIANCE WITH BS 7671:2018 +A2:2022. INCLUDE ALL NECESSARY OFFSETS OF SERVICES IN CEILING VOIDS, SERVICE DUCTS AND ALL OTHER AREAS TO ACHIEVE CROSSOVERS AND CO-ORDINATION OF MECHANICAL AND ELECTRICAL SERVICES.
 - THIS DRAWING MUST BE READ IN CONJUNCTION WITH THE ARCHITECTS LAYOUT, ELEVATIONS AND RCP'S.
 - REFER TO SCHEMATIC WIRING DIAGRAMS FOR FURTHER INFORMATION WHERE APPLICABLE.
 - FOR DISTRIBUTION BOARD REFERENCES, REFER TO LOW VOLTAGE DISTRIBUTION SCHEMATICS.
 - REFER TO THE TYPICAL RISER SETTING OUT DRAWING FOR FURTHER INFORMATION ON RISERS.
 - REFER TO APARTMENT LAYOUT DRAWINGS FOR FURTHER DETAILS ON SERVICES WITHIN APARTMENTS.
 - FIRE DETECTION AND ALARM SYSTEM OF A MINIMUM

- ### LIGHTING NOTES
- REFER TO SEPARATE LIGHTING SCHEDULES FOR LUMINAIRE DETAILS.
 - REFER TO LIGHTING DESIGN STUDIO AND UNIVERSAL DESIGN STUDIO DOCUMENTS FOR FURTHER DETAILS ON LUMINAIRES AND CONTROLS.
 - UPON ACTIVATION OF ANY PIR IN THE STAIR CORE, LIGHTING ON THAT FLOOR, THE FLOOR ABOVE AND THE FLOOR BELOW WILL ACTIVATE.
 - EMERGENCY LIGHTING TEST KEY SWITCHES TO BE LOCATED ADJACENT DISTRIBUTION BOARDS.
 - REFER TO FLOOR PLANS FOR LOCATIONS OF ALL EMERGENCY LIGHTING AND EMERGENCY EXIT SIGNS. THESE ARE TO BE PROVIDED WITH 3-HOUR BATTERY BACK-UP.
 - LIGHTING WITHIN LIFTS IS TO BE PROVIDED BY OTHERS.
 - THE WIRING INSTALLATION TO ALL LUMINAIRES WITHIN THE FIRE-FIGHTING ACCESS CORRIDOR, STAIRCASE AND LIFT LOBBIES IS TO BE CARRIED OUT USING FIRE-RESISTANT CABLES IN ACCORDANCE WITH BS9999 AND BS6387.
 - ALL EXTERNAL FITTINGS AND ACCESSORIES SHALL BE WEATHERPROOF AND IP RATED.
 - LIGHTING TYPES TO BE CONFIRMED PRIOR TO ORDER OF LIGHTING AND ACCESSORIES.

- ### FIRE ALARM NOTES
- THE FIRE ALARM SYSTEM HAS BEEN DESIGNED IN ACCORDANCE WITH BS5839-1 AND BS5839-6.
 - THE SYSTEM SHALL BE CLASSIFIED AS A CATEGORY L.
 - CATEGORY L2 ON ALL THE NON-RESIDENTIAL LEVELS.
 - CATEGORY L5 ON THE RESIDENTIAL FLOORS WITHIN LANDLORD AREAS.
 - CATEGORY LD1 WITHIN ALL APARTMENTS.
 - INTERFACES ASSOCIATED WITH ALL MECHANICAL SERVICES SHALL BE COORDINATED WITH THE MECHANICAL SUB-CONTRACTOR AND SPECIALIST INSTALLERS PRIOR TO FIRST FIX.
 - SURFACE MOUNTED AND RECESSED EXTERNAL ELECTRICAL ACCESSORIES SHALL BE RATED IP67 PROTECTION AND COORDINATED WITH THE ARCHITECT AND FACADE SPECIALIST PRIOR TO FIRST FIX.
 - REFER TO SEPARATE SCHEMATICS FOR FURTHER DETAILS OF THE FIRE ALARM SYSTEM, DISABLED REFUGE SYSTEM AND THE DISABLED TOILET ALARM SYSTEM.
 - LOOP REFERENCES, SIZING AND VOLTAGE DROPS ETC. SHALL BE CALCULATED BY THE SPECIALIST CONTRACTOR.
 - THE SPECIALIST SHALL ENSURE 95% SPARE CAPACITY PER LOOP AND A MINIMUM OF 30% SPARE ADDRESS CAPACITY.
 - CEILING VOIDS GREATER THAN 800mm SHALL BE PROTECTED BY FIRE DETECTION. REMOTE LED INDICATORS ARE TO BE PROVIDED TO INDICATE THE OPERATION OF AUTOMATIC DETECTORS WHICH ARE MOUNTED IN LOCATIONS WHERE THEY CANNOT READILY BE SEEN.



P2	13.02.24	PRELIMINARY ISSUE - 02	DQ	PQ
P1	07.10.24	PRELIMINARY ISSUE - 01	DQ	PQ
REV	Date	Description	DR	CK

Caldwell

ARCHITECT
 FM - CM
 PROJECT- 4180
 CHARLOTTE STREET
 LONDON

PROJECT STATUS
S4
 DRAWING
ELECTRICAL SERVICES INSTALLATION
LIGHTING & FIRE ALARM SERVICES
FIRST FLOOR LAYOUT

SCALE	DATE	DESIGNED	CHECKED
1:50@A1	JULY'24	DQ	PQ
DRAWING No.			REV
4180-CCE-BDE-01-DR-E-74002			P2

FIRE ALARM LEGEND

- S** SMOKE DETECTOR WITH SOUNDER BASE.
- H** HEAT DETECTOR WITH SOUNDER BASE.
- L** LANDLORD SYSTEM DETECTOR
- IU** FIRE ALARM INTERFACE UNIT (FOR INTERFACE UNIT LOCATIONS & QUANTITIES REFER TO LIGHTING AND FIRE ALARM LAYOUTS).
- WALL MOUNTED SOUNDER & XENON BEACON
- FAP** FIRE ALARM PANEL
- MANUAL CALL POINT

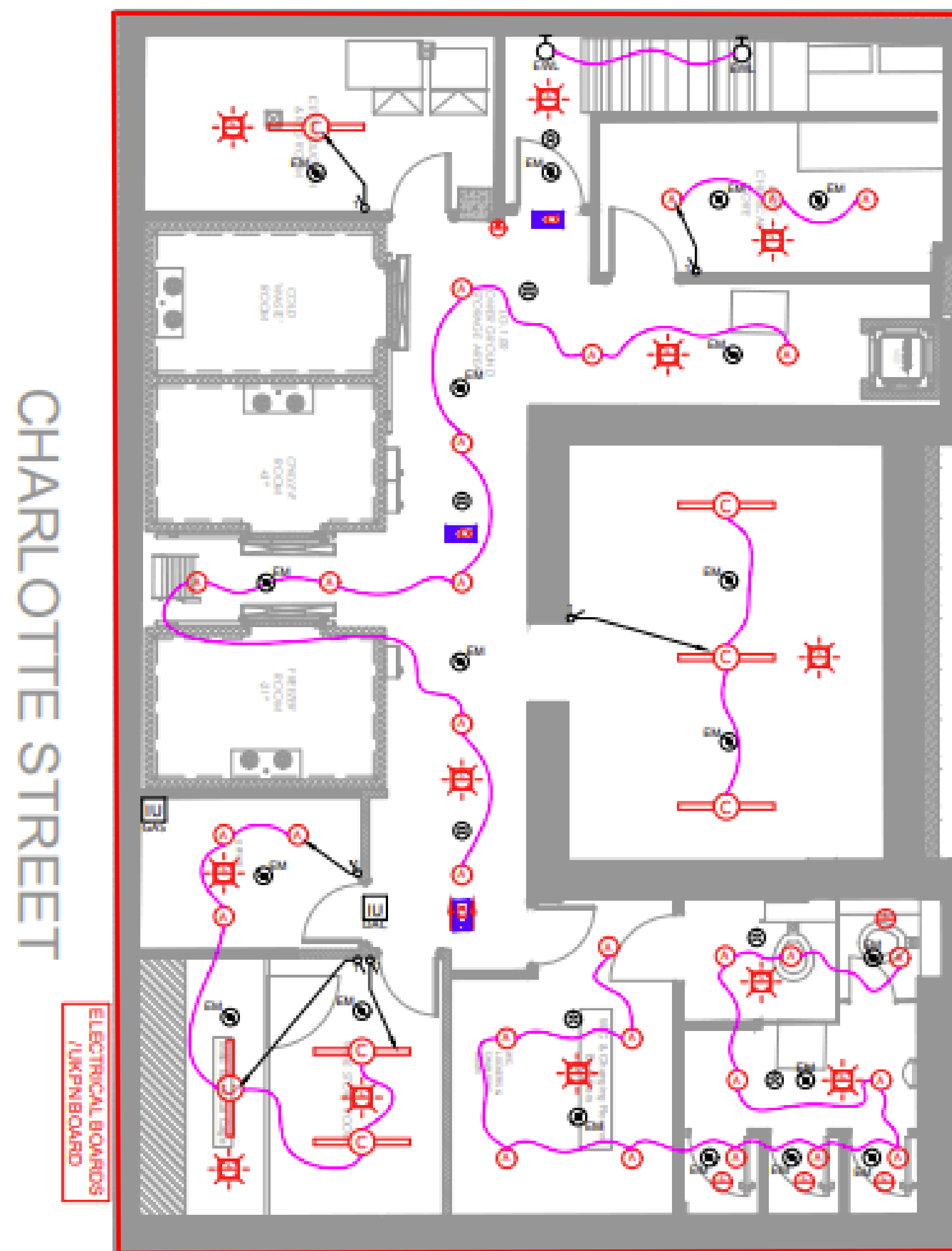
ABBREVIATIONS

- DTA** DISABLED TOILET ALARM
- SPK** AV SPEAKER
- FCU** FAN COIL UNIT
- AWN** EXTERNAL AWNING
- ELH** EXTERNAL ELECTRIC HEATER
- EH** INTERNAL ELECTRIC HEATER
- HD** HAND DRYER
- CV** CEILING VOID
- GAS** GAS SOLENOID
- DAC** DOOR ACCESS CONTROL

LIGHTING LEGEND

- A1** LED SPOTLIGHT
- B** LED WALL MOUNTED BULKHEAD
- B** LED CEILING MOUNTED BULKHEAD
- C** LED CEILING MOUNTED BULKHEAD
- PRESENCE DETECTOR
- E1** EMERGENCY DOWNLIGHT ESCAPE ROUTE - CORRIDORS - RECESSED
- E2** EMERGENCY DOWNLIGHT EXTERNAL LIGHTING - WALL MOUNTED
- E3** EMERGENCY DOWNLIGHT ESCAPE ROUTE - OPEN AREAS - RECESSED
- E5** EMERGENCY TWIN DOWNLIGHT - EXTERNAL - WALL MOUNTED
- EX1** EMERGENCY EXIT SIGN - IP42
- EX2** EMERGENCY EXIT SIGN - IP67
- EX3** DOUBLE SIDED DIRECTIONAL EMERGENCY EXIT SIGN - IP42
- n** ONE WAY SWITCH GENERAL (N DENOTES NUMBER OF GANGS)

— Licensable activities



LIGHTING NOTES

- REFER TO SEPARATE LIGHTING SCHEDULES FOR LUMINAIRE DETAILS.
- REFER TO LIGHTING DESIGN STUDIO AND UNIVERSAL DESIGN STUDIO DOCUMENTS FOR FURTHER DETAILS ON LUMINAIRES AND CONTROLS.
- UPON ACTIVATION OF ANY PIR IN THE STAIR CORE, LIGHTING ON THAT FLOOR, THE FLOOR ABOVE AND THE FLOOR BELOW WILL ACTIVATE.
- EMERGENCY LIGHTING TEST KEY SWITCHES TO BE LOCATED ADJACENT DISTRIBUTION BOARDS.
- REFER TO FLOOR PLANS FOR LOCATIONS OF ALL EMERGENCY LIGHTING AND EMERGENCY EXIT SIGNS. THESE ARE TO BE PROVIDED WITH 3-HOUR BATTERY BACK-UP.
- LIGHTING WITHIN LIFTS IS TO BE PROVIDED BY OTHERS.
- THE WIRING INSTALLATION TO ALL LUMINAIRES WITHIN THE FIRE-FIGHTING ACCESS CORRIDOR, STAIRCASE AND LIFT LOBBIES IS TO BE CARRIED OUT USING FIRE-RESISTANT CABLES IN ACCORDANCE WITH BS9999 AND BS6387.
- ALL EXTERNAL FITTINGS AND ACCESSORIES SHALL BE WEATHERPROOF AND IP RATED.
- CEILING TYPES TO BE CONFIRMED PRIOR TO ORDER OF LIGHTING AND ACCESSORIES.

FIRE ALARM NOTES

- THE FIRE ALARM SYSTEM HAS BEEN DESIGNED IN ACCORDANCE WITH BS5839-1 AND BS5839-6.
- THE SYSTEM SHALL BE CLASSIFIED AS A CATEGORY L.
- CATEGORY L2 ON ALL THE NON-RESIDENTIAL LEVELS.
- CATEGORY L5 ON THE RESIDENTIAL FLOORS WITHIN LANDLORD AREAS.
- CATEGORY LD1 WITHIN ALL APARTMENTS.
- INTERFACES ASSOCIATED WITH ALL MECHANICAL SERVICES SHALL BE COORDINATED WITH THE MECHANICAL SUB-CONTRACTOR AND SPECIALIST INSTALLERS PRIOR TO FIRST FIX.
- SURFACE MOUNTED AND RECESSED EXTERNAL ELECTRICAL ACCESSORIES SHALL BE RATED IP67 PROTECTION AND COORDINATED WITH THE ARCHITECT AND FACADE SPECIALIST PRIOR TO FIRST FIX.
- REFER TO SEPARATE SCHEMATICS FOR FURTHER DETAILS OF THE FIRE ALARM SYSTEM, DISABLED REFUGES SYSTEM AND THE DISABLED TOILET ALARM SYSTEM.
- LOOP REFERENCES, SIZING AND VOLTAGE DROPS ETC. SHALL BE CALCULATED BY THE SPECIALIST CONTRACTOR.
- THE SPECIALIST SHALL ENSURE 95% SPARE CAPACITY PER LOOP AND A MINIMUM OF 30% SPARE ADDRESS CAPACITY.
- CEILING VOIDS GREATER THAN 800mm SHALL BE PROTECTED BY FIRE DETECTION. REMOTE LED INDICATORS ARE TO BE PROVIDED TO INDICATE THE OPERATION OF AUTOMATIC DETECTORS WHICH ARE MOUNTED IN LOCATIONS WHERE THEY CANNOT READILY BE SEEN.

GENERAL NOTES

- NOTES AS DETAILED ON ALL DRAWINGS APPLY
- WHERE APPROPRIATE THIS DRAWING SHALL BE READ IN CONJUNCTION WITH ALL OTHER TENDER DRAWINGS AND DOCUMENTS.
- THE COMPLETE ELECTRICAL INSTALLATION SHALL BE IN COMPLIANCE WITH BS 7671:2018 +A2:2022. INCLUDE ALL NECESSARY OFFSETS OF SERVICES IN CEILING VOIDS, SERVICE DUCTS AND ALL OTHER AREAS TO ACHIEVE CROSSOVERS AND CO-ORDINATION OF MECHANICAL AND ELECTRICAL SERVICES.
- THIS DRAWING MUST BE READ IN CONJUNCTION WITH THE ARCHITECT'S LAYOUT, ELEVATIONS AND RCP'S.
- REFER TO SCHEMATIC WIRING DIAGRAMS FOR FURTHER INFORMATION WHERE APPLICABLE. FOR DISTRIBUTION BOARD REFERENCES, REFER TO LOW VOLTAGE DISTRIBUTION SCHEMATICS. REFER TO THE TYPICAL RISER SETTING OUT DRAWING FOR FURTHER INFORMATION ON RISERS. REFER TO APARTMENT LAYOUT DRAWINGS FOR FURTHER DETAILS ON SERVICES WITHIN APARTMENTS.
- FIRE DETECTION AND ALARM SYSTEM OF A MINIMUM CATEGORY L2 IN ACCORDANCE WITH BS 5839.

P2	13.02.25PRELIMINARY ISSUE - 02	ND	PQ
P1	07.10.24PRELIMINARY ISSUE - 01	DQ	PQ
REV Date	Description	DR	CK

Caldwell

ARCHITECT
 FM - CM
 PROJECT- 4180
**CHARLOTTE STREET
 LONDON**

PROJECT STATUS
S4
 DRAWING
ELECTRICAL SERVICES INSTALLATION
LIGHTING & FIRE ALARM SERVICES

BASEMENT FLOOR 1 LAYOUT

SCALE	DATE	DESIGNED	CHECKED
1:50@A1	JULY'24	DQ	PQ
DRAWING No.			REV
4180-CCE-BDE-B1-DR-E-74000			P2